

Магнитные миксеры

Технические характеристики

По вопросам продаж и поддержки обращайтесь:

Алматы (727)345-47-04
Ангарск (3955)60-70-56
Архангельск (8182)63-90-72
Астрахань (8512)99-46-04
Барнаул (3852)73-04-60
Белгород (4722)40-23-64
Благовещенск (4162)22-76-07
Брянск (4832)59-03-52
Владивосток (423)249-28-31
Владикавказ (8672)28-90-48
Владимир (4922)49-43-18
Волгоград (844)278-03-48
Вологда (8172)26-41-59
Воронеж (473)204-51-73
Екатеринбург (343)384-55-89

Иваново (4932)77-34-06
Ижевск (3412)26-03-58
Иркутск (395)279-98-46
Казань (843)206-01-48
Калининград (4012)72-03-81
Калуга (4842)92-23-67
Кемерово (3842)65-04-62
Киров (8332)68-02-04
Коломна (4966)23-41-49
Кострома (4942)77-07-48
Краснодар (861)203-40-90
Красноярск (391)204-63-61
Курск (4712)77-13-04
Курган (3522)50-90-47
Липецк (4742)52-20-81

Магнитогорск (3519)55-03-13
Москва (495)268-04-70
Мурманск (8152)59-64-93
Набережные Челны (8552)20-53-41
Нижний Новгород (831)429-08-12
Новокузнецк (3843)20-46-81
Ноябрьск (3496)41-32-12
Новосибирск (383)227-86-73
Омск (3812)21-46-40
Орел (4862)44-53-42
Оренбург (3532)37-68-04
Пенза (8412)22-31-16
Петрозаводск (8142)55-98-37
Псков (8112)59-10-37
Пермь (342)205-81-47

Ростов-на-Дону (863)308-18-15
Рязань (4912)46-61-64
Самара (846)206-03-16
Санкт-Петербург (812)309-46-40
Саратов (845)249-38-78
Севастополь (8692)22-31-93
Саранск (8342)22-96-24
Симферополь (3652)67-13-56
Смоленск (4812)29-41-54
Сочи (862)225-72-31
Ставрополь (8652)20-65-13
Сургут (3462)77-98-35
Сыктывкар (8212)25-95-17
Тамбов (4752)50-40-97
Тверь (4822)63-31-35

Тольятти (8482)63-91-07
Томск (3822)98-41-53
Тула (4872)33-79-87
Тюмень (3452)66-21-18
Ульяновск (8422)24-23-59
Улан-Удэ (3012)59-97-51
Уфа (347)229-48-12
Хабаровск (4212)92-98-04
Чебоксары (8352)28-53-07
Челябинск (351)202-03-61
Череповец (8202)49-02-64
Чита (3022)38-34-83
Якутск (4112)23-90-97
Ярославль (4852)69-52-93

Россия +7(495)268-04-70

Казахстан +(727)345-47-04

Беларусь +(375)257-127-884

Узбекистан +998(71)205-18-59

Киргизия +996(312)96-26-47

эл. почта: kua@nt-rt.ru || сайт: <https://kosun.nt-rt.ru/>



Stainless Steel Magnetic Drive Mixer

Tank bottom mixers are essential equipment in pharmaceutical reactor tanks, as they ensure proper mixing of the ingredients and facilitate efficient heat transfer during the production process. One of the most innovative and effective types of tank bottom mixers is the magnetic tank bottom mixer. Magnetic tank bottom mixers use magnetic coupling technology to drive the mixing impeller, eliminating the need for mechanical seals and preventing leakage of hazardous or sterile mate...



Aseptic Magnetic Mixer

Aseptic magnetic drive agitators are widely used in the Pharmaceutical and Biotech Industries in ultra-sterile applications including mixing, diluting, maintaining in suspension, thermal exchange, etc. They provide absolute assurance that there can be no contact between the tank internals and the outside atmosphere due to the fact that there is no penetration of the tank shell and no mechanical shaft seal. Total tank integrity is assured and any risk of



stainless steel magnetic drive mixer

Tank bottom mixers are essential equipment in pharmaceutical reactor tanks, as they ensure proper mixing of the ingredients and facilitate efficient heat transfer during the production process. One of the most innovative and effective types of tank bottom mixers is the magnetic tank bottom mixer.

Magnetic tank bottom mixers use magnetic coupling technology to drive the mixing impeller, eliminating the need for mechanical seals and preventing leakage of hazardous or sterile materials. This not only ensures a cleaner and safer production environment but also reduces the risk of contamination, making it ideal for pharmaceutical applications where product purity is of utmost importance.

The magnetic tank bottom mixer also offers several other advantages over traditional mixers. For example, it provides a higher level of efficiency and reliability, as the absence of mechanical seals eliminates the risk of wear and maintenance issues. This results in reduced downtime and lower operating costs for pharmaceutical manufacturers.

Furthermore, the magnetic tank bottom mixer allows for more precise control of the mixing process, enabling operators to adjust the speed and intensity of the mixing action to achieve the desired consistency and temperature within the reactor tank. This level of control is crucial in pharmaceutical production, where even minor variations in mixing can impact the quality and efficacy of the final product.

Overall, the magnetic tank bottom mixer is a valuable tool for pharmaceutical manufacturers looking to optimize their production processes and ensure the highest standards of product quality and safety. Its innovative design, efficient operation, and precise control capabilities make it an essential component for any pharmaceutical reactor tank.

Magnetic Agitator

Aseptic magnetic drive agitators are widely used in the Pharmaceutical and Biotech Industries in ultra-sterile applications. They provide absolute assurance that there can be no contact between the tank internals and the outside atmosphere due to the fact that there is no penetration of the tank shell and no mechanical shaft seal. Total tank integrity is assured and any risk of toxic or high value product leakage is eliminated.

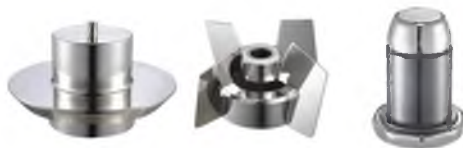
Features and benefits:

- Fully open impeller design which allow fully cleaning and sterilization of CIP and SIP
- No penetration of the tank shell and no mechanical shaft seal allow an aseptic design avoiding any risk of contamination or leakage
- Sanitary design to meet current pharmaceutical requirements
- 8 Different models for different vessel volumes and agitation levels
- Allow low minimum working volumes not feasible with Traditional mixers Suitable for viscosities up to 300 cps
- Using an inverter speeds from 50 to 800 RPM are possible allowing a range of agitation levels from gentle to vigorous



Low speed impeller

- 8 models for different tank volume
- Low shear, 50-400RPM
- For normal liquid mixing
- For non shearing working condition



High shear impeller

- Sterile design
- 1480-2860RPM
- For shearing working condition



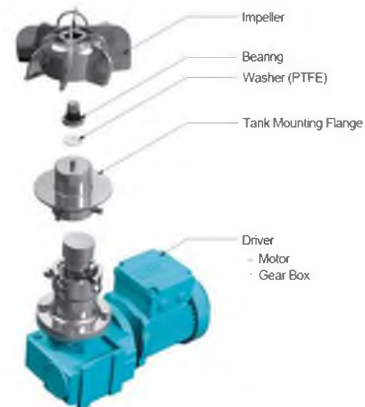
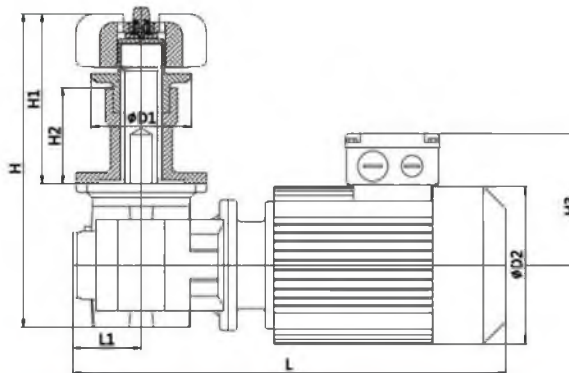
Tech Data

Tank volume: 20L - 10T
 Model: MT90-MT320
 Max Rpm: 800Rpm
 Max working pressure: 220°C
 Max Viscosity: 300 Cps
 VFD: VFD available
 Power supply: 0.18-5.5kw/380V/50Hz
 Motor brand: SEW / Nord
 Impeller material: 316L
 Non contact material: 304
 Bearing Material: SIC/WC

Product Model

Model	Impeller style	Power supply	Tank volume	RPM Recommend
MT90	Φ90	0.18kw	20L-50L	355
MT120	Φ120	0.25kw	80L-200L	355
MT155	Φ155	0.55kw	300L-500L	355
MT200	Φ200	1.1kw	1000L-2000L	355
MT220	Φ220	1.5kw	2000L-3000L	355
MT240	Φ240	2.2kw	3000L-4000L	355
MT270	Φ260	3.0kw	4000L-5000L	355
MT320	Φ320	4.0kw	6000L-15000L	355

Dimensions



Model	L	L1	H	H1	H2	H3	D2	D1
MT90	334	63	290	158	80	129	139	92
MT120	346	63	294	162	88	129	139	92
MT155	371	63	309	177	109	129	139	115
MT200	411	63	365	233	139	139	156	180
MT220	463	75	374	233	139	150	156	180
MT240	463	75	386	245	140	150	179	190
MT270	463	75	386	245	140	150	179	190
MT320	463	75	431	290	160	150	179	235

Aseptic Magnetic Mixer

KOSUN FLUID



Short Description:

Aseptic magnetic drive agitators are widely used in the Pharmaceutical and Biotech Industries in ultra-sterile applications including mixing, diluting, maintaining in suspension, thermal exchange, etc. They provide absolute assurance that there can be no contact between the tank internals and the outside atmosphere due to the fact that there is no penetration of the tank shell and no mechanical shaft seal. Total tank integrity is assured and any risk of toxic or high value product leakage is eliminated.

For tank size:	50L-500L tank
Motor:	0.55kw - 3kw
RPM:	50-450RPM

Aseptic magnetic drive agitators are widely used in the Pharmaceutical and Biotech Industries in ultra-sterile applications including mixing, diluting, maintaining in suspension, thermal exchange, etc. They provide absolute assurance that there can be no contact between the tank internals and the outside atmosphere due to the fact that there is no penetration of the tank shell and no mechanical shaft seal. Total tank integrity is assured and any risk of toxic or high value product leakage is eliminated.

Features and benefits:

- No penetration of the tank shell and no mechanical shaft seal allow an aseptic design avoiding any risk of contamination or leakage
- Sanitary design to meet current pharmaceutical requirements
- 7 Different models for different vessel volumes and agitation levels
- Allow low minimum working volumes not feasible with traditional mixers
- Suitable for viscosities up to 1000 cP
- Suitable for CIP or SIP in situ or autoclave
- Able to be removed quickly and easily - a major advantage when sterilizing in an autoclave or sharing a single drive unit mechanism between vessels
- Using an inverter speeds from 50 to 450 RPM are possible allowing a range of agitation levels from gentle to vigorous
- Bottom mounting means that the top of the vessel is left clear for easy access
- The specially designed impellor geometry ensures optimized agitation with a very low shear rate. Additionally the blade design is such that a proportion of the cleaning fluid is directed through the head

По вопросам продаж и поддержки обращайтесь:

Алматы (727)345-47-04
Ангарск (3955)60-70-56
Архангельск (8182)63-90-72
Астрахань (8512)99-46-04
Барнаул (3852)73-04-60
Белгород (4722)40-23-64
Благовещенск (4162)22-76-07
Брянск (4832)59-03-52
Владивосток (423)249-28-31
Владикавказ (8672)28-90-48
Владимир (4922)49-43-18
Волгоград (844)278-03-48
Вологда (8172)26-41-59
Воронеж (473)204-51-73
Екатеринбург (343)384-55-89

Иваново (4932)77-34-06
Ижевск (3412)26-03-58
Иркутск (395)279-98-46
Казань (843)206-01-48
Калининград (4012)72-03-81
Калуга (4842)92-23-67
Кемерово (3842)65-04-62
Киров (8332)68-02-04
Коломна (4966)23-41-49
Кострома (4942)77-07-48
Краснодар (861)203-40-90
Красноярск (391)204-63-61
Курск (4712)77-13-04
Курган (3522)50-90-47
Липецк (4742)52-20-81

Магнитогорск (3519)55-03-13
Москва (495)268-04-70
Мурманск (8152)59-64-93
Набережные Челны (8552)20-53-41
Новокузнецк (3843)20-46-81
Ноябрьск (3496)41-32-12
Новосибирск (383)227-86-73
Омск (3812)21-46-40
Орел (4862)44-53-42
Оренбург (3532)37-68-04
Пенза (8412)22-31-16
Петрозаводск (8142)55-98-37
Псков (8112)59-10-37
Пермь (342)205-81-47

Ростов-на-Дону (863)308-18-15
Рязань (4912)46-61-64
Самара (846)206-03-16
Санкт-Петербург (812)309-46-40
Саратов (845)249-38-78
Севастополь (8692)22-31-93
Саранск (8342)22-96-24
Симферополь (3652)67-13-56
Смоленск (4812)29-41-54
Сочи (862)225-72-31
Ставрополь (8652)20-65-13
Сургут (3462)77-98-35
Сыктывкар (8212)25-95-17
Тамбов (4752)50-40-97
Тверь (4822)63-31-35

Тольятти (8482)63-91-07
Томск (3822)98-41-53
Тула (4872)33-79-87
Тюмень (3452)66-21-18
Ульяновск (8422)24-23-59
Улан-Удэ (3012)59-97-51
Уфа (347)229-48-12
Хабаровск (4212)92-98-04
Чебоксары (8352)28-53-07
Челябинск (351)202-03-61
Череповец (8202)49-02-64
Чита (3022)38-34-83
Якутск (4112)23-90-97
Ярославль (4852)69-52-93

Россия +7(495)268-04-70

Казахстан +(727)345-47-04

Беларусь +(375)257-127-884

Узбекистан +998(71)205-18-59

Киргизия +996(312)96-26-47

эл.почта: kua@nt-rt.ru || сайт: <https://kosun.nt-rt.ru/>