

Роторно-кулачковые насосы

Технические характеристики

По вопросам продаж и поддержки обращайтесь:

Алматы (727)345-47-04
Ангарск (3955)60-70-56
Архангельск (8182)63-90-72
Астрахань (8512)99-46-04
Барнаул (3852)73-04-60
Белгород (4722)40-23-64
Благовещенск (4162)22-76-07
Брянск (4832)59-03-52
Владивосток (423)249-28-31
Владикавказ (8672)28-90-48
Владимир (4922)49-43-18
Волгоград (844)278-03-48
Вологда (8172)26-41-59
Воронеж (473)204-51-73
Екатеринбург (343)384-55-89

Иваново (4932)77-34-06
Ижевск (3412)26-03-58
Иркутск (395)279-98-46
Казань (843)206-01-48
Калининград (4012)72-03-81
Калуга (4842)92-23-67
Кемерово (3842)65-04-62
Киров (8332)68-02-04
Коломна (4966)23-41-49
Кострома (4942)77-07-48
Краснодар (861)203-40-90
Красноярск (391)204-63-61
Курск (4712)77-13-04
Курган (3522)50-90-47
Липецк (4742)52-20-81

Магнитогорск (3519)55-03-13
Москва (495)268-04-70
Мурманск (8152)59-64-93
Набережные Челны (8552)20-53-41
Нижний Новгород (831)429-08-12
Новокузнецк (3843)20-46-81
Ноябрьск (3496)41-32-12
Новосибирск (383)227-86-73
Омск (3812)21-46-40
Орел (4862)44-53-42
Оренбург (3532)37-68-04
Пенза (8412)22-31-16
Петрозаводск (8142)55-98-37
Псков (8112)59-10-37
Пермь (342)205-81-47

Ростов-на-Дону (863)308-18-15
Рязань (4912)46-61-64
Самара (846)206-03-16
Санкт-Петербург (812)309-46-40
Саратов (845)249-38-78
Севастополь (8692)22-31-93
Саранск (8342)22-96-24
Симферополь (3652)67-13-56
Смоленск (4812)29-41-54
Сочи (862)225-72-31
Ставрополь (8652)20-65-13
Сургут (3462)77-98-35
Сыктывкар (8212)25-95-17
Тамбов (4752)50-40-97
Тверь (4822)63-31-35

Тольятти (8482)63-91-07
Томск (3822)98-41-53
Тула (4872)33-79-87
Тюмень (3452)66-21-18
Ульяновск (8422)24-23-59
Улан-Удэ (3012)59-97-51
Уфа (347)229-48-12
Хабаровск (4212)92-98-04
Чебоксары (8352)28-53-07
Челябинск (351)202-03-61
Череповец (8202)49-02-64
Чита (3022)38-34-83
Якутск (4112)23-90-97
Ярославль (4852)69-52-93

Россия +7(495)268-04-70

Казахстан +(727)345-47-04

Беларусь +(375)257-127-884

Узбекистан +998(71)205-18-59

Киргизия +996(312)96-26-47

эл. почта: kua@nt-rt.ru || сайт: <https://kosun.nt-rt.ru/>

KOSUN FLUID



Stainless Steel Sanitary Food Grade Rotary Lobe Pump

rotary lobe pump is a sanitary pump used in food grade working conditions. Suitable for the working environment of CIP SIP, the surface treatment reaches 0.2um-0.4um. Used to deliver mayonnaise, Tomato Sauce, Ketchup Paste, jam, chocolate, honey etc products



Sanitary Rotary Lobe Pump

What is a rotary lobe pump? Rotary lobe pumps are positive-displacement type pumps that use two or more lobes rotating around parallel shafts in the pump's body to move liquids. They are widely used in the hygienic processing industries, including food & beverage processing and biopharmaceutical manufacturing. What is a rotary lobe pump? Rotary lobe pumps are positive-displacement type pumps that use two or more lobes rotating around parallel shafts in the pump's body

KOSUN FLUID



Hot Water Jacket Rotor Lobe Pump For Chocolate

Hot water jacket rotor lobe pump is a special rotary lobe pump with a jacket around the pump head for chocolate or honey deliver.

KOSUN FLUID



Explosion Proof Peanut Butter Jam Toothpaste Pump

Explosion proof rotary lobe pump is a special rotary lobe pump with a explosion proof motor. Mainly used in flammable and explosive working environment.

KOSUN FLUID



Stainless Steel Rotary Lobe Honey Transfer Pump

This type of rotary lobe pump is equipped with a trolley and a control box for movable working condition. The speed of the pump is adjustable.

KOSUN FLUID



Stainless Steel High Viscosity Pump For Sugar Syrup

The rotary lobe pump is designed with hygienic features to used for food grade delivery. It could be used to deliver high viscosity and also low viscosity fluid with solids. The rotor lobe pump could be used for deliver Jam, pastes, Chocolate, syrup, sauce, and wine etc.

Stainless Steel Pneumatic Diaphragm Pump

Stainless steel pneumatic diaphragm pumps are an essential component in various industries and applications. These pumps are designed to handle liquids of different viscosities, temperatures, and corrosive properties. The stainless steel construction of these pumps is durable, easy to maintain, and resists wear and tear. Here are some of the advantages of using a stainless steel pneumatic diaphragm pump: 1. High-Quality Materials – The use of high-quality stainless steel

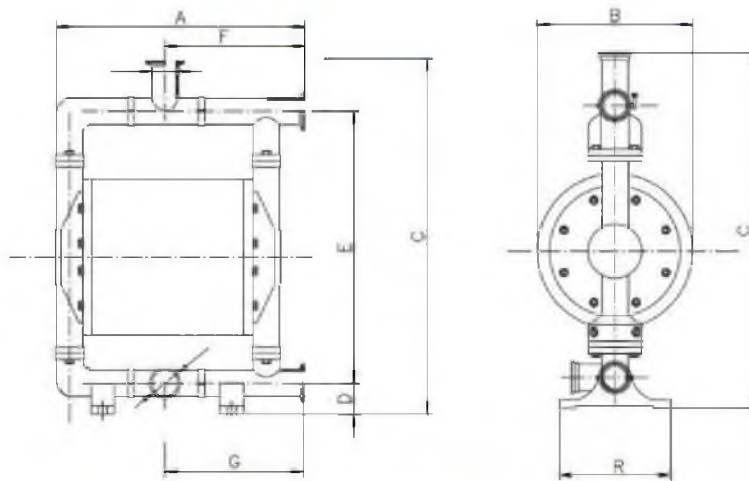
stainless steel pneumatic diaphragm pump

Stainless steel pneumatic diaphragm pumps are an essential component in various industries and applications. These pumps are designed to handle liquids of different viscosities, temperatures, and corrosive properties. The stainless steel construction of these pumps is durable, easy to maintain, and resists wear and tear. Here are some of the advantages of using a stainless steel pneumatic diaphragm pump:

1. High-Quality Materials - The use of high-quality stainless steel ensures that the pump is resistant to corrosion and chemical damage, making it ideal for harsh environments where other pumps might fail.
2. Excellent Durability - Stainless steel is a tough material that can withstand high pressures, heavy loads, and harsh conditions. This durability translates to longer pump life and reduced maintenance costs.
3. Easy to Clean - The smooth surface of stainless steel makes it easy to clean, ensuring that the pump stays sanitary and hygienic throughout its operation.
4. Low Maintenance Requirements - Stainless steel pumps require minimal maintenance due to their non-reactive nature, which prevents corrosion and wear. This reduces downtime and increases productivity.
5. Energy Efficient - Pneumatic diaphragm pumps use compressed air to operate, which saves energy and reduces utility costs. This makes them an environmentally-friendly option as well.

Overall, the stainless steel pneumatic diaphragm pump is an excellent choice for any industry requiring a tough, durable, and reliable pump for transferring liquids. With its high-quality materials, excellent durability, and easy maintenance, it is an investment that pays off in both the short and long term.

DIMENSIONS



Model	Inlet	Outlet	A	B	C	D	E	F	G	R
GMB-20-25	DN20/25	DN20/25	230	170	340	39	255	128	128	121
GMB-32-38	DN32/38	DN32/38	320	205	420	40	330	176	176	161
GMB-51-63	DN51/63	DN51/63	410	270	555	56	428	220	220	193
GMB-76-89	DN76/89	DN76/89	500	320	710	69	550	271	271	228

Hot water jacket rotor lobe pump for chocolate



Short Description:

Hot water jacket rotor lobe pump is a special rotary lobe pump with a jacket around the pump head for chocolate or honey deliver.

Material:	304 or 316 Stainless steel
Connection:	1"-4"Tri clamp
Flow rate:	500L- 50000L
Pressure:	0-6 bar

Hot water jacket rotor lobe pump is a special rotary lobe pump with a jacket around the pump head for chocolate or honey deliver.

Sanitary stainless steel rotor pump is a kind of positive displacement pump, also known as lobe pump, rotary lobe pump, three lobe pump. It achieves the purpose of conveying fluid by means of the periodic conversion of multiple fixed volume conveying units in the working chamber. It is suitable for delivering low and high viscosity products.

Advantages of the rotary lobe pump

The streamline structure of the rotor and the inner cavity of the pump body are smooth.

The rotor is an O-seal and the axis, which effectively prevents the material to penetrate the shaft and the gap of the shaft hole.

Compared with the parts in contact with the material, it is made of stainless steel material that meets the standard of sanitary standard, and the sealed rubber is used to use sanitary rubber.

There is a mechanical seal and oil seal between the pump parts and the gearbox portion, and the oil stain does not penetrate the goods to the inside of the pump chamber, ensuring media hygiene, safe delivery.

PRODUCT NAME	JACKETED ROTARY LOBE PUMP
Connection Size	1"-4" triclamp
Material	EN 1.4301, EN 1.4404, T304, T316L etc
Temperature Range	0-150 C
Working pressure	0-6 bar
Flow rate	500L- 50000L



Sanitary rotary lobe pump

Rotary lobe pumps are positive-displacement type pumps that use two or more lobes rotating around parallel shafts in the pump's body to move liquids. They are widely used in the hygienic processing industries, including food & beverage processing and biopharmaceutical manufacturing.

Sanitary rotary lobe pump application fields

1. Food and beverages: dairy products, latex, chocolate, syrup, cheese, wort, beer and soda.
2. Concentrated fruit: pudding, jam, jelly and tomato sauce.
3. Paste products: grease, etc.
4. Cosmetics: face cream, detergent, hair gel, perfume oil, etc.
5. Drugs: extracts, emulsions, pills, etc.
6. Chemical industry: dyes, fats, solvents, resins and polymers.

Single stage emulsifier pump



Model	Motor Power (kw)	RPM (r/min)	Flow (m ³ /h)	Inlet	Outlet
SRH-1-100	2.2	2900	0-3	DN40	DN32
SRH-1-130	4		0-4	DN40	DN32
SRH-1-140	5.5		0-5	DN50	DN40
SRH-1-165	7.5		0-8	DN50	DN40
SRH-1-180	11		0-12	DN65	DN50
SRH-1-200	22		0-20	DN65	DN50

Three stage emulsifier pump



Model	Power (kw)	RPM (r/min)	Flow (m ³ /h)	Inlet	Outlet
SRH-3-60	4	2900	0-4	DN40	DN40
SRH-3-100	7.5		0-8	DN50	DN40
SRH-3-120	11		0-12	DN50	DN40
SRH-3-140	15		0-18	DN50	DN50
SRH-3-165	22		0-22	DN65	DN50
SRH-3-200	37		0-30	DN80	DN50
SRH-3-220	55		0-40	DN100	DN65



Stainless steel rotary lobe honey transfer pump

Short Description:

This type of rotary lobe pump is equipped with a trolley and a control box for movable working condition. The speed of the pump is adjustable.

Material:	304 or 316 Stainless steel
Connection:	1"-4"Tri clamp
Flow rate:	500L- 50000L
Pressure:	0-6 bar

This type of rotary lobe pump is equipped with a trolley and a control box for movable working condition. The speed of the pump is adjustable.

The pump is fully sanitary design and have below features.

- * The streamline structure of the rotor inner pump are smooth
- * There are O-rings at both ends of the rotor and the shaft to effectively prevent the material from penetrating into the gap between the shaft and the shaft hole.
- * Parts in contact with materials are made of stainless steel materials that meet sanitary standards, and the sealing rubber is sanitary rubber.
- * There are mechanical seals and oil seals between the pump body part and the gear box part. Oil stains will not penetrate and splash into the pump cavity to ensure the hygienic and safe delivery of the medium.

PRODUCT NAME	EXPLOSION PROOF ROTARY LOBE PUMP
Connection Size	1"-4" triclamp
Material	EN 1.4301, EN 1.4404, T304, T316L etc
Temperature Range	0-150 C
Working pressure	0-6 bar
Flow rate	500L- 50000L



Stainless steel high viscosity pump for sugar syrup

Short Description:

The rotary lobe pump is designed with hygienic features to used for food grade delivery. It could be used to deliver high viscosity and also low viscosity fluid with solids. The rotor lobe pump could be used for deliver Jam, pastes, Chocolate, syrup, sauce, and wine etc.

The rotary lobe pump is designed with hygienic features to used for food grade delivery. It could be used to deliver high viscosity and also low viscosity fluid with solids. The rotor lobe pump could be used for deliver Jam, pastes, Chocolate, syrup, sauce, and wine etc.

Rotary lobe pumps are positive-displacement type pumps that use two or more lobes rotating around parallel shafts in the pump's body to move liquids. They are widely used in the hygienic processing industries, including food & beverage processing and bio pharmaceutical manufacturing.

The shear force of the transport medium is small, and the rotor speed is generally 40 ~ 400R / min. The hygienic rotor pump can deliver a wide medium with a wide viscosity domain, which can deliver fluids having a viscosity of up to 2 million CP. Since there is a reasonable gap design between the two rotors, it is possible to transport the suspension, solid particles, and crystallized fluid through the clearance. After configuring the drive, you can adjust the traffic and use the general metering pump.

PRODUCT NAME	ROTARY LOBE PUMP
Connection Size	1"-4" triclamp
Material	EN 1.4301, EN 1.4404, T304, T316L etc
Temperature Range	0-150 C
Working pressure	0-6 bar
Flow rate	500L- 50000L

Stainless steel sanitary food grade rotary lobe pump



Short Description:

rotary lobe pump is a sanitary pump used in food grade working conditions. Suitable for the working environment of CIP SIP, the surface treatment reaches 0.2um-0.4um. Used to deliver mayonnaise, Tomato Sauce, Ketchup Paste, jam, chocolate, honey etc products

Material:	304 or 316 Stainless steel
Connection:	1"-4"Tri clamp
Flow rate:	500L- 50000L
Pressure:	0-6 bar

Rotary lobe pump is a sanitary pump used in food grade working conditions.

Suitable for the working environment of CIP SIP, the surface treatment reaches 0.2um-0.4um. Used to deliver mayonnaise, Tomato Sauce, Ketchup Paste, jam, chocolate, honey etc products. During use, there is no hard collision and metal friction between the two rotors and the rotor with pump cavity, which improves the service life. Due to the high manufacturing precision, the vibration is small, the operation is stable, and the service life of the seal is increased correspondingly.

PRODUCT NAME	ROTARY LOBE PUMP
Connection Size	1"-4" triclamp
Material	EN 1.4301, EN 1.4404, T304, T316L etc
Temperature Range	0-150 C
Working pressure	0-6 bar
Flow rate	500L- 50000L

Explosion proof peanut butter jam toothpaste pump



Short Description:

Explosion proof rotary lobe pump is a special rotary lobe pump with a explosion proof motor. Mainly used in flammable and explosive working environment.

Material:	304 or 316 Stainless steel
Connection:	1"-4"Tri clamp
Flow rate:	500L- 50000L
Pressure:	0-6 bar

PRODUCT NAME	EXPLOSION PROOF ROTARY LOBE PUMP
Connection Size	1"-4" triclamp
Material	EN 1.4301, EN 1.4404, T304, T316L etc
Temperature Range	0-150 C
Working pressure	0-6 bar
Flow rate	500L- 50000L

Fixed speed pump with gear reducer



Main features:
strong carrying capacity, simple transmission and long service life. In the case of conveying materials of high viscosity, the advantages are obvious. If the variable frequency motor is used with the inverter, the flow can be automatically adjusted.

Speed adjustable pump with VFD and control boxa



Main features:
Through the frequency converter or digital control, the materials can be conveyed in a quantitative, timed manner at fixed pressure. It can be used as a common metering pump.

Pump with hopper inlet



Main features:
The size of the feeding port is increased to avoid blocking at the inlet. It is suitable for use in service conditions where the materials have very poor fluidity and very high viscosity.

Pump with safety valve

Pump model



Model	Displacement	Rotation speed	Corresponding flow rate	Power	Pressure	Maximum viscosity	Standard size	Connector form
YUY-Z-5	0.05	40-500	120-1500	0.55-0.75	0.1-1.2	200000	Φ 25	Olamp Thread Flang
YUY-Z-10	0.10	40-500	240-3000	1.5	0.1-1.2	200000	Φ 32	
YUY-Z-15	0.15	40-500	320-4000	1.5-2.2	0.1-1.2	200000	Φ 32	
YUY-Z-20	0.20	40-500	480-5400	1.5-3	0.1-1.2	200000	Φ 32	
YUY-Z-35	0.35	40-450	840-9450	2.2-4	0.1-1.2	200000	Φ 51	
YUY-Z-45	0.45	40-450	950-10500	4	0.1-1.2	200000	Φ 51	
YUY-Z-65	0.65	40-400	1560-14000	5.5-7.5	0.1-1.2	200000	Φ 63	
YUY-Z-80	0.80	40-400	1750-17000	5.5-7.5	0.1-1.2	200000	Φ 63	
YUY-Z-110	1.10	40-400	2400-23500	7.5-11	0.1-1.2	200000	Φ 76	
YUY-Z-175	1.75	40-400	3800-37800	11-15	0.1-1.2	200000	Φ 76	
YUY-Z-220	2.20	40-400	4750-47500	15-18.5	0.1-1.2	200000	Φ 89	
YUY-Z-270	2.70	40-400	5800-58000	18.5-22	0.1-1.2	200000	Φ 89	
YUY-Z-365	3.65	40-400	7900-78500	22-30	0.1-1.2	200000	Φ 102	
YUY-Z-520	5.20	40-400	11300-110000	37-55	0.1-1.2	200000	Φ 102	

Note: The corresponding flow rate can be obtained according to volume 0.9. The "power" in the table may vary according to different medium viscosity and outlet pressure.

По вопросам продаж и поддержки обращайтесь:

Алматы (727)345-47-04
Ангарск (3955)60-70-56
Архангельск (8182)63-90-72
Астрахань (8512)99-46-04
Барнаул (3852)73-04-60
Белгород (4722)40-23-64
Благовещенск (4162)22-76-07
Брянск (4832)59-03-52
Владивосток (423)249-28-31
Владикавказ (8672)28-90-48
Владимир (4922)49-43-18
Волгоград (844)278-03-48
Вологда (8172)26-41-59
Воронеж (473)204-51-73
Екатеринбург (343)384-55-89

Иваново (4932)77-34-06
Ижевск (3412)26-03-58
Иркутск (395)279-98-46
Казань (843)206-01-48
Калининград (4012)72-03-81
Калуга (4842)92-23-67
Кемерово (3842)65-04-62
Киров (8332)68-02-04
Коломна (4966)23-41-49
Кострома (4942)77-07-48
Краснодар (861)203-40-90
Красноярск (391)204-63-61
Курск (4712)77-13-04
Курган (3522)50-90-47
Липецк (4742)52-20-81

Магнитогорск (3519)55-03-13
Москва (495)268-04-70
Мурманск (8152)59-64-93
Набережные Челны (8552)20-53-41
Новокузнецк (3843)20-46-81
Ноябрьск (3496)41-32-12
Новосибирск (383)227-86-73
Омск (3812)21-46-40
Орел (4862)44-53-42
Оренбург (3532)37-68-04
Пенза (8412)22-31-16
Петрозаводск (8142)55-98-37
Псков (8112)59-10-37
Пермь (342)205-81-47

Ростов-на-Дону (863)308-18-15
Рязань (4912)46-61-64
Самара (846)206-03-16
Санкт-Петербург (812)309-46-40
Саратов (845)249-38-78
Севастополь (8692)22-31-93
Саранск (8342)22-96-24
Симферополь (3652)67-13-56
Смоленск (4812)29-41-54
Сочи (862)225-72-31
Ставрополь (8652)20-65-13
Сургут (3462)77-98-35
Сыктывкар (8212)25-95-17
Тамбов (4752)50-40-97
Тверь (4822)63-31-35

Тольятти (8482)63-91-07
Томск (3822)98-41-53
Тула (4872)33-79-87
Тюмень (3452)66-21-18
Ульяновск (8422)24-23-59
Улан-Удэ (3012)59-97-51
Уфа (347)229-48-12
Хабаровск (4212)92-98-04
Чебоксары (8352)28-53-07
Челябинск (351)202-03-61
Череповец (8202)49-02-64
Чита (3022)38-34-83
Якутск (4112)23-90-97
Ярославль (4852)69-52-93

Россия +7(495)268-04-70

Казахстан +(727)345-47-04

Беларусь +(375)257-127-884

Узбекистан +998(71)205-18-59

Киргизия +996(312)96-26-47

эл.почта: kua@nt-rt.ru || сайт: <https://kosun.nt-rt.ru/>